

Lavender CBG

Lab ID: 2010032-02

Whole Circle Farms
AG-R10408871HG

Harvest / Process Lot: 09/2020

METRC Batch ID: WCF-2020-LAV-002

Date Sampled: 10/05/20

Date Printed: 10/9/20

Potency Analysis

Analytical Method: De Backer, Journal of Chromatography b.2009. 11.004 - SOP 102

Cannabinoids (% weight)		Moisture Adjusted	LOQ
THCA	0.0904	0.100	0.0825
delta 9-THC	< LOQ	< LOQ	0.0825
delta 8-THC	< LOQ	< LOQ	0.0825
CBGA	8.68	9.59	0.0825
CBDA	0.0913	0.101	0.0825
CBD	< LOQ	< LOQ	0.0825
CBN	< LOQ	< LOQ	0.0825
CBG	0.218	0.242	0.0825
CBC	< LOQ	< LOQ	0.0825
Total CBG	7.83	8.66	0.0825
Total Cannabinoids	7.99	8.83	0.0825

Total THC
0.0877 %

Total CBD
0.0885 %

<LOQ - Results below the Limit of Quantitation

Acid form of THC/CBD are decarboxylated by heat, lose 12% of original mass as CO₂. Result = "bioactive"

"Total" Cannabinoid accounts for decarboxylation and moisture content. Total THC = [(THCA×0.877) + Δ9THC] / (100%-MC)

Moisture

Analysis Method/SOP: SOP 7

Moisture: 9.58 %

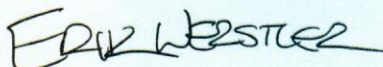
Water Activity

Analysis Method/SOP: SOP 8

Results above 0.65 fail state testing requirements and will be highlighted **Red**.

Water Activity: 0.542

PASS



Erik Werstler
Lab Director

Lavender CBG

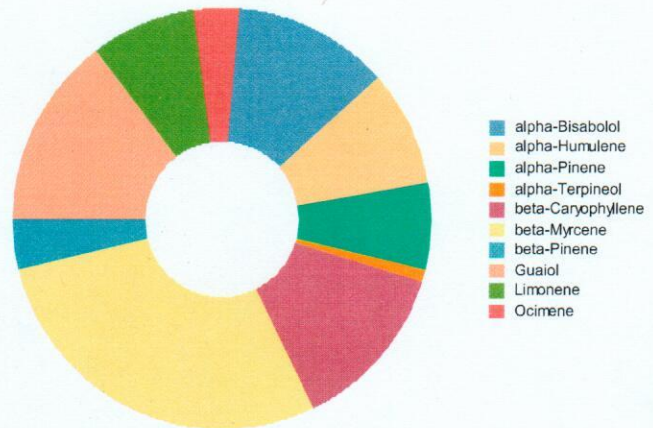
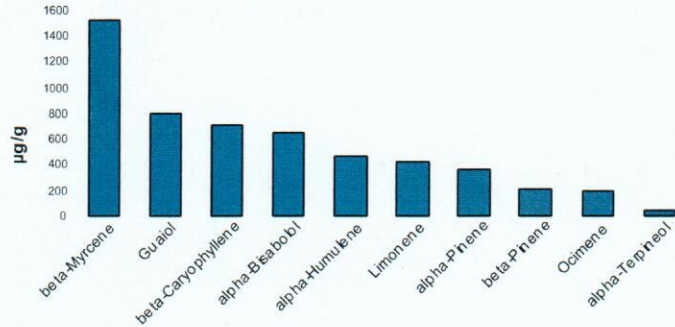
Whole Circle Farms

Laboratory ID: 2009013-02

Terpene Test Report

Analysis Method/SOP: Terp

Analyte	Result µg/g	Result %
alpha-Bisabolol	647.1	0.06471
Camphene	< LOQ	< LOQ
Camphor	< LOQ	< LOQ
delta-3-Carene	< LOQ	< LOQ
beta-Caryophyllene	704	0.07040
Caryophyllene Oxide	< LOQ	< LOQ
alpha-Cedrene	< LOQ	< LOQ
Cedrol	< LOQ	< LOQ
p-Cymene	< LOQ	< LOQ
(1R)-endo-(+)-Fenchyl alcohol	< LOQ	< LOQ
Eucalyptol	< LOQ	< LOQ
Geraniol	< LOQ	< LOQ
Geranyl acetate	< LOQ	< LOQ
Guaiol	794.9	0.07949
alpha-Humulene	475.1	0.04751
Isoborneol	< LOQ	< LOQ
Isopulegol	< LOQ	< LOQ
Limonene	428.5	0.04285
Linalool	< LOQ	< LOQ
beta-Myrcene	1522	0.1522
Nerolidol	< LOQ	< LOQ
Ocimene	192.2	0.01922
alpha-Pinene	361.2	0.03612
beta-Pinene	210.4	0.02104
Pulegone	< LOQ	< LOQ
Sabinene	< LOQ	< LOQ
Sabinene hydrate	< LOQ	< LOQ
gamma-Terpinene	< LOQ	< LOQ
alpha-Terpinene	< LOQ	< LOQ
Terpinolene	< LOQ	< LOQ
Valencene	< LOQ	< LOQ
Nerol	< LOQ	< LOQ
(+/-)-Borneol	< LOQ	< LOQ



Erik Werstler

Erik Werstler
Lab Director

Lavender CBG

Whole Circle Farms

Laboratory ID: 2009013-02

Analysis Method/SOP: Terp

Analyte	Result µg/g	Result %
(+/-)-Fenchone	< LOQ	< LOQ
alpha-Phellandrene	< LOQ	< LOQ
cis-Farnesene	< LOQ	< LOQ
Menthol	< LOQ	< LOQ
trans-Farnesene	< LOQ	< LOQ
alpha-Terpineol	45.37	0.004537
gamma-Terpineol	< LOQ	< LOQ
Total Terpenes	5381	0.5381



Erik Werstler
Lab Director

Lavender CBG

Whole Circle Farms

AG-R10408871HG

Laboratory ID: 2010032-02

Lavender CBG

Whole Circle Farms

Sample ID: 2010032-02

Matrix: Hemp

M #:

Date Sampled: 10/05/20 14:17

Date Accepted: 10/05/20

Results Valid Until: 10/05/21

Pesticide Analysis in PPM

Date/Time Extracted: 10/06/20 13:26

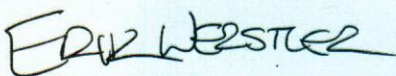
Date/Time Analyzed: 10/07/20 01:06

Analysis Method/SOP: SOP 33

Instrument: Selene

Batch Identification: B20J022

Analyte	Result	Action Level	LOQ	Type
Abamectin	< LOQ	0.5	0.2500	Avermectin insecticide
Acephate	< LOQ	0.4	0.2000	Organophosphate Insecticide
Acequinocyl	< LOQ	2	1.000	Quinoline insecticide
Acetamiprid	< LOQ	0.2	0.1000	Neonicotinoid insecticide
Aldicarb	< LOQ	0.4	0.2000	Carbamate insecticide
Azoxystrobin	< LOQ	0.2	0.1000	Strobin fungicide
Bifenazate	< LOQ	0.2	0.1000	Carbazate miticide
Bifenthrin	< LOQ	0.2	0.1000	Pyrethroid insecticide
Boscalid	< LOQ	0.4	0.2000	Carboxamide fungicide
Carbaryl	< LOQ	0.2	0.1000	Carbamate insecticide
Carbofuran	< LOQ	0.2	0.1000	Carbamate insecticide
Chlorantraniliprole	< LOQ	0.2	0.1000	Anthranilic diamide insecticide
Chlorfenapyr	< LOQ	1	0.5000	Pyrrole insecticide
Chlorpyrifos	< LOQ	0.2	0.1000	Organophosphate Insecticide
Clofentezine	< LOQ	0.2	0.1000	Tetrazine miticide
Cyfluthrin	< LOQ	1	0.5000	Pyrethroid insecticide
Cypermethrin	< LOQ	1	0.5000	Pyrethroid insecticide
Daminozide	< LOQ	1	0.5000	Plant growth regulator
DDVP (Dichlorvos)	< LOQ	1	0.5000	Organophosphate insecticide
Diazinon	< LOQ	0.2	0.1000	Organophosphate Insecticide
Dimethoate	< LOQ	0.2	0.1000	Organophosphate insecticide
Ethoprophos	< LOQ	0.2	0.1000	Organophosphate insecticide
Etofenprox	< LOQ	0.4	0.2000	Pyrethroid insecticide
Etoxazole	< LOQ	0.2	0.1000	Oxazoline insecticide
Fenoxycarb	< LOQ	0.2	0.1000	Carbamate insecticide
Fenpyroximate	< LOQ	0.4	0.2000	Pyrazolium miticide
Fipronil	< LOQ	0.4	0.2000	Pyrazole insecticide
Flonicamid	< LOQ	1	0.5000	Pyridinecarboxamide insecticide



Erik Werstler
Lab Director

Lavender CBG

Whole Circle Farms

AG-R10408871HG

Laboratory ID: 2010032-02

Lavender CBG

Whole Circle Farms

Sample ID: 2010032-02

Matrix: Hemp

M #:

Date Sampled: 10/05/20 14:17

Date Accepted: 10/05/20

Results Valid Until: 10/05/21

Pesticide Analysis in PPM

Date/Time Extracted: 10/06/20 13:26

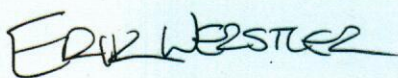
Date/Time Analyzed: 10/07/20 01:06

Analysis Method/SOP: SOP 33

Instrument: Selene

Batch Identification: B20J022

Analyte	Result	Action Level	LOQ	Type
Fludioxonil	< LOQ	0.4	0.2000	Benzodioxole fungicide
Hexythiazox	< LOQ	1	0.5000	Heterocyclic miticide
Imazalil	< LOQ	0.2	0.1000	Imidazole fungicide
Imidacloprid	< LOQ	0.4	0.2000	Neonicotinoid insecticide
Kresoxim-methyl	< LOQ	0.4	0.2000	Strobilurin fungicide
Malathion	< LOQ	0.2	0.1000	Organophosphate insecticide
Metalaxyl	< LOQ	0.2	0.1000	Benzenoid fungicide
Methiocarb	< LOQ	0.2	0.1000	Carbamate insecticide
Methomyl	< LOQ	0.4	0.2000	Carbamate insecticide
Methyl parathion	< LOQ	0.2	0.1000	Organophosphate insecticide
MGK-264	< LOQ	0.2	0.1000	Pesticide synergist
Myclobutanil	< LOQ	0.2	0.1000	Triazole fungicide
Naled	< LOQ	0.5	0.2500	Organophosphate insecticide
Oxamyl	< LOQ	1	0.5000	Carbamate insecticide
Pacllobutrazol	< LOQ	0.4	0.2000	Triazole fungicide
Permethrins	< LOQ	0.2	0.1000	Pyrethroid insecticide
Phosmet	< LOQ	0.2	0.1000	Organophosphate insecticide
Piperonyl butoxide	< LOQ	2	1.000	Pesticide synergist
Prallethrin	< LOQ	0.2	0.1000	Pyrethroid insecticide
Propiconazole	< LOQ	0.4	0.2000	Triazole fungicide
Propoxur	< LOQ	0.2	0.1000	Carbamate insecticide
Pyrethrins	< LOQ	1	0.5000	Pyrethroid insecticide
Pyridaben	< LOQ	0.2	0.1000	Pyridazinone insecticide
Spinosad	< LOQ	0.2	0.1000	Spinosyn insecticide
Spiromesifen	< LOQ	0.2	0.1000	Keto-enol insecticide
Spirotetramat	< LOQ	0.2	0.1000	Keto-enol insecticide
Spiroxamine	< LOQ	0.4	0.2000	Spiroketalamine fungicide
Tebuconazole	< LOQ	0.4	0.2000	Triazole fungicide



Erik Werstler

Lab Director

Lavender CBG

Whole Circle Farms

AG-R10408871HG

Laboratory ID: 2010032-02

Lavender CBG

Whole Circle Farms

Sample ID: 2010032-02

Matrix: Hemp

M #:

Date Sampled: 10/05/20 14:17

Date Accepted: 10/05/20

Results Valid Until: 10/05/21

Pesticide Analysis in PPM

Date/Time Extracted: 10/06/20 13:26

Date/Time Analyzed: 10/07/20 01:06

Analysis Method/SOP: SOP 33

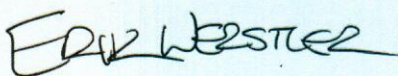
Instrument: Selene

Batch Identification: B20J022

Analyte	Result	Action Level	LOQ	Type
Thiacloprid	< LOQ	0.2	0.1000	Neonicotinoid insecticide
Thiamethoxam	< LOQ	0.2	0.1000	Neonicotinoid insecticide
Trifloxystrobin	< LOQ	0.2	0.1000	Strobin fungicide

<LOQ - Results below the Limit of Quantitation - Compound not detected

Results above the Action Level fail state testing requirements and will be highlighted Red.



Erik Werstler

Lab Director